



# Rotary Paddle Level Switch



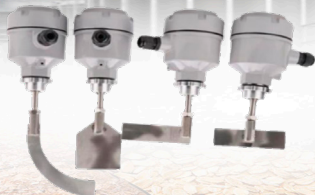
Poultry Feed



Cattle Feed



Grass Feed

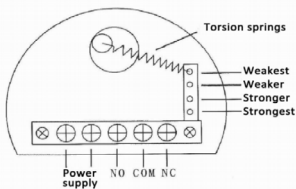


## Product Description

Rotary resistance switch is a level controller for surface materials (including powder, block, granular, gel, etc.). It has the characteristics of good sealing, strong overload capacity, light weight and easy installation, and large output contact capacity. For materials with different specific gravities, it can be realized by adjusting the tension of the spring, and the parts in contact with the materials are all stainless steel materials. Rotary resistance switches have been widely used in the chemical, plastic, cement, pharmaceutical, feed, and food industries.

## Working Principle

The motor drives the blade to rotate, when the measured medium reaches the position of the blade, the blade is blocked and stops rotating, thus triggering the micro switch at the back to output the switching signal, when the measured medium drops and leaves the blade, the blade resumes its original position and continues to rotate under the action of the spring. The tension of the spring can be adjusted according to the specific gravity of the measured medium, when the material is larger than the spring is adjusted to the strongest, and vice versa, the spring is adjusted to the weakest.



## Product features

- American small hopper professional technology, three bearing support, more reliable operation
  - The original sealing design can prevent dust infiltration (patented actual)
  - Stable and reliable torque and adjustable torque size
  - The blade is subjected to excessive load and the clutch slips automatically to protect the motor from damage
  - Electromechanical separated structure, the whole disassembly-free and easy maintenance;
  - IP65 protection level of the junction box, good sealing, can be used outdoors;
  - Special blades can be used in low-density materials
  - Wide range of use, can be used in steel, cement, electricity, feed, chemical plastics, chemical fertilizers, etc..
- Chemical fertilizer and so on.



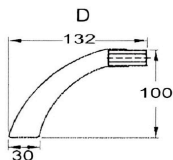
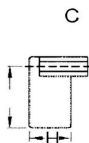
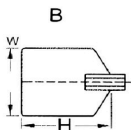
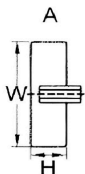
ITEM	PARAMETER
Power supply	220VAC/110VAC/24VAC/24VDC
Contact capacity	250VAC/10ASPDT (single-pole double-throw)
Power	4W
Blade speed	1RPM (rpm)
Torque	1.0kg×cm
Material specific gravity	≥ 0.5g/cm <sup>3</sup>
Operating temperature	- 10°C -80°C (up to 400°C )
Insulation resistance	≥100MΩ
Dielectric strength	1500V*1min
Protection grade	IP65
Blade material	SUS304

Model		Small Hopper Type		
	Connected Shaft Form			
	0	Standard Thread Mounting Type		
	1	Standard Flange Mounting Type		
	2	Shaft Protection Pipe Type		
	3	High Temperature Threaded Type		
	4	High Temperature Flange Type		
	5	High Temperature Protection Pipe Type		
		<b>Blade Type</b>		
		A	85 x 35 (WXH)	
	B	Scythe-shaped		
		Power Supply		
		1	220VAC	
		2	24VDC	



Model		Standard Type		
	Connected Shaft Form			
		0	Standard Thread Mounting Type	
		1	Standard Flange Mounting Type	
		2	Shaft Protection Pipe Type	
		3	High Temperature Threaded Type	
		4	High Temperature Flange Type	
		5	High Temperature Protection Pipe Type	
		6	Shaft Length Adjustable	
	7	Steel Cable Type		
		<b>Blade Type</b>		
			A	100*30 (WXH)
			B	65*80 (WXH)
			C	50*30 (WXH)
			D	Scythe-shaped
			<b>Power Supply</b>	
1			220VAC	
2	110VAC			
3	24VAC			
4	24VDC			

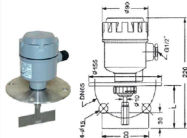
**Remarks:** Blade Type



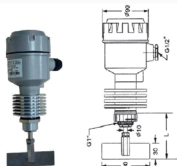
Model 20-S/21-S/60-S/62-S: L=100mm  
 Model 30-S/61-S: L=250mm  
 Model 50-F1/63-S: L=650mm

length can be customized  
 according to customer requirements

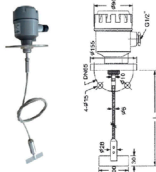
**21-S Standard flange mounting type**



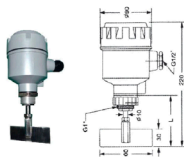
**60-S High Temperature Threaded Type**



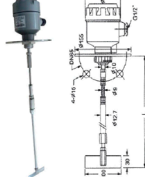
**63-S Steel Cable Type**



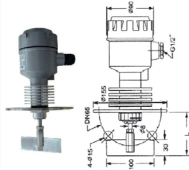
**20-S Standard Thread Mounting Type**



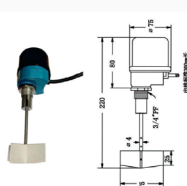
**50-F1 Shaft Length Adjustable**



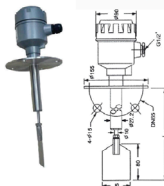
**62-S High Temperature Flange Type**



**10-S Small Hopper Type**



**30-S Shaft Protection Pipe Type**



**61-S High Temperature Protection Pipe Type**

